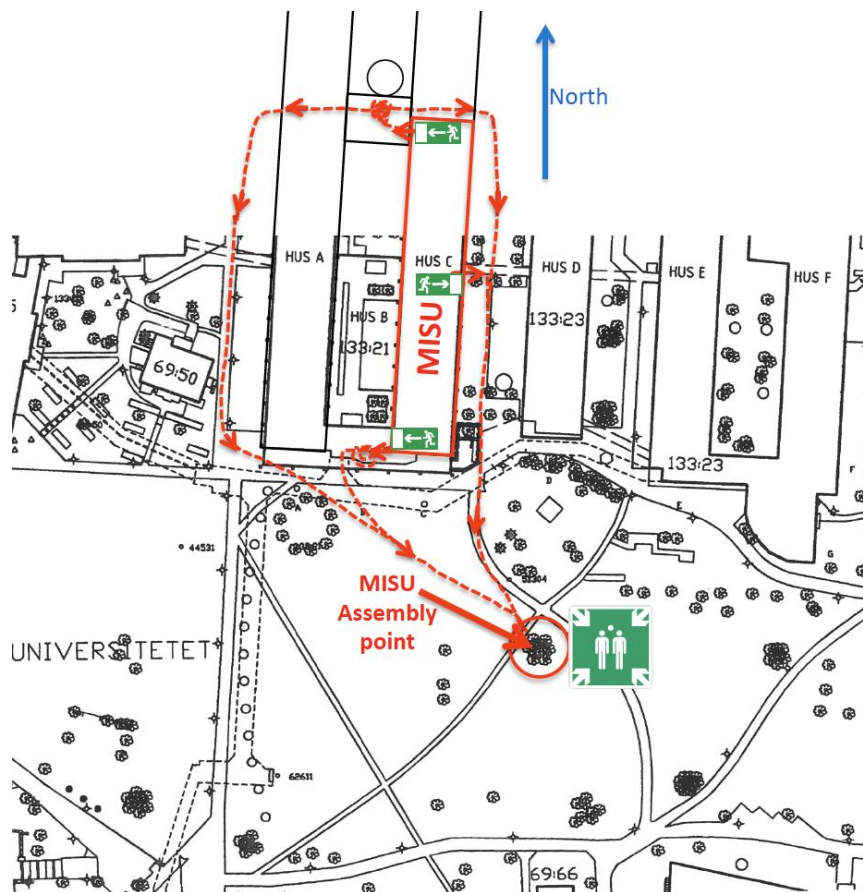


Emergency escape routes:

In case of fire/evacuation alarm, use one of the emergency exits (**use the one closest to you and do not use the elevators**):

1. at the northern end of the corridor,
2. at the southern end of the corridor,
3. in the middle of the corridor, opposite the staff lunch room,
4. on floor 5 under the staircase, and
5. in the Ekman room (C502c) on floor 5.



Regroup at the Assembly point:

By the grove across the lawn outside the main entrance of the Arrhenius lab.

NB! Boxes or other materials must NOT be stored in the corridor.

Fire extinguishers:

Marked by signs on the wall above them

- outside the toilets, northern end of the corridor: Water post
- outside the door to the gas lab, C673: Fire extinguisher (foam/"skum")
- outside the door to the student lab, C659: Fire extinguisher (CO₂)
- outside the door to room C647: Fire extinguisher (CO₂)
- outside the staff lunch room: Fire extinguisher (foam/"skum")
and Water post (in shaft 10)
- in the student lunch room, C625: Fire extinguisher (CO₂)
- outside the office supply/printer room, C617: Fire extinguisher (foam/"skum")
- outside the toilets, southern end of the corridor: Fire extinguisher (foam/"skum")
- at the main entrance, in shaft 1: Water post
- on level 5, under the staircase: Fire extinguisher (foam/"skum")

There are also a number of **CO₂ fire extinguishers in the labs** that people working there will be informed about, and a **foam fire extinguisher in Bjerknessalen, room C651**. The water posts are for use by the fire fighters when they arrive.

Evacuation plans are posted in the corridor on the walls:

- outside seminar room C609, Rossbysalen
- outside the staff lunch room,
- in the northern end of the corridor, and
- on floor 5 opposite room C502a.

First aid kits/Medicine cabinet

Located in the corridor on the wall outside the staff lunch room and contain:

- fire blankets,
- gas-masks,
- eye wash bottle,
- first aid kit,
- painkiller tablets
- evacuation binder

Simpler first aid kits can also be found on the wall outside the toilets at the reception and in the AP- and CM-labs.