



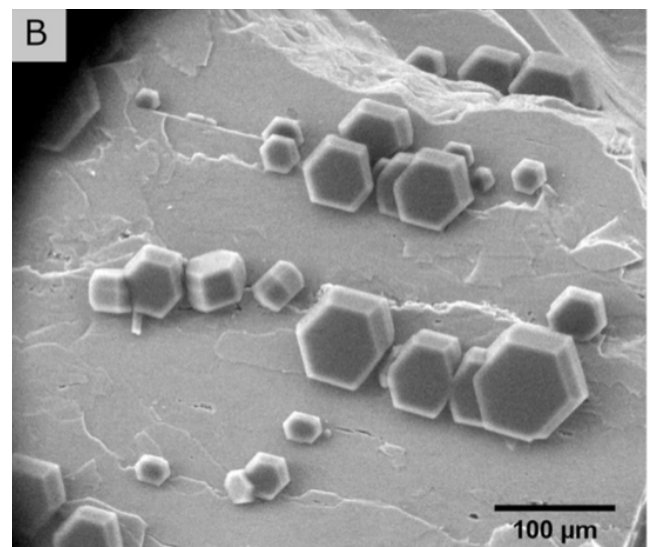
Atmospheric Ice Nucleating Particles: Why we care and what we know!

Ice nucleating particles induce the ice formation in clouds and through this influence weather and climate. While first knowledge about them was gained already some decades ago, research on them kicked up in recent years, leading to new insights. But there are still important open issues we need to understand.

The presentation will give an overview of the existing knowledge, starting from findings in the old days, focusing on new results and also mentioning open issues.

Ice columns growing on a slab of feldspar, shortly after ice active sites on the feldspar nucleated the ice.

A. Kiselev et al., Science 10.1126/science.aai8034 (2016).



Speaker: Dr. Heike Wex

Leibniz Institute for Tropospheric Research, Germany

Time: January 23, 11h15–12h15

Place: Ahlmannsalen, Geoscience Building

The lecture will be streamed and you can watch it live here:

<https://connect.sunet.se/bolincentre>. It will also be saved on the Bolin Centre website.